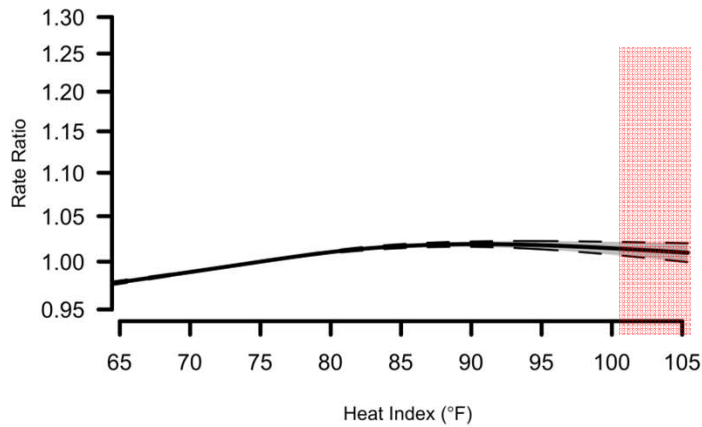
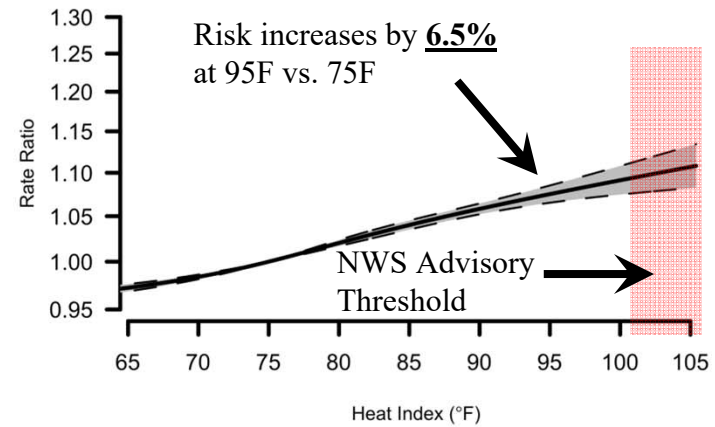


Risk of All-Cause ED Visits and Deaths as it relates to Heat Index

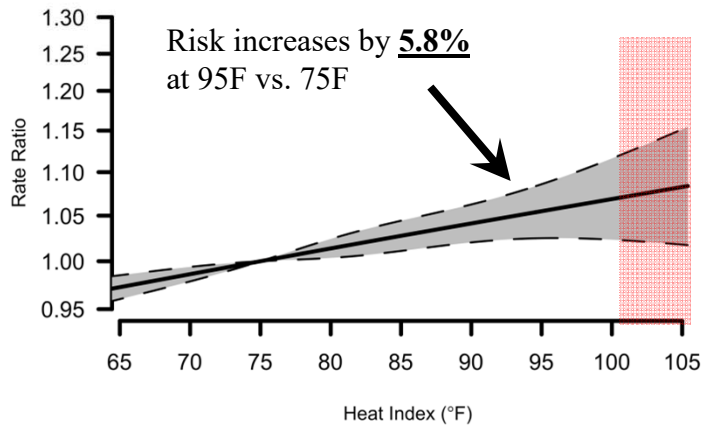
Lag 0 ED Admissions



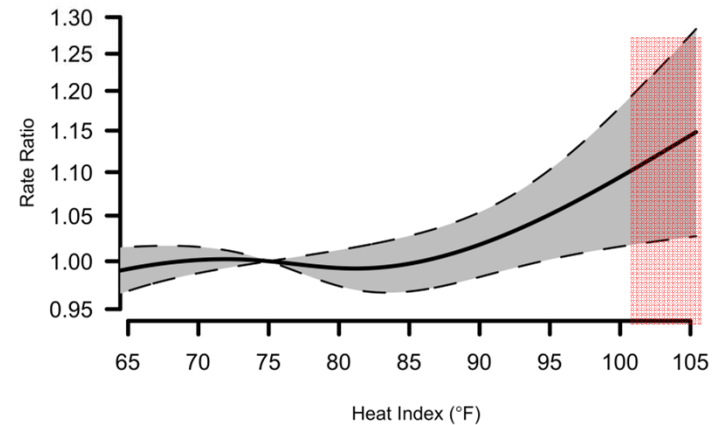
Cumulative ED Admissions



Lag 0 Deaths



Cumulative Deaths

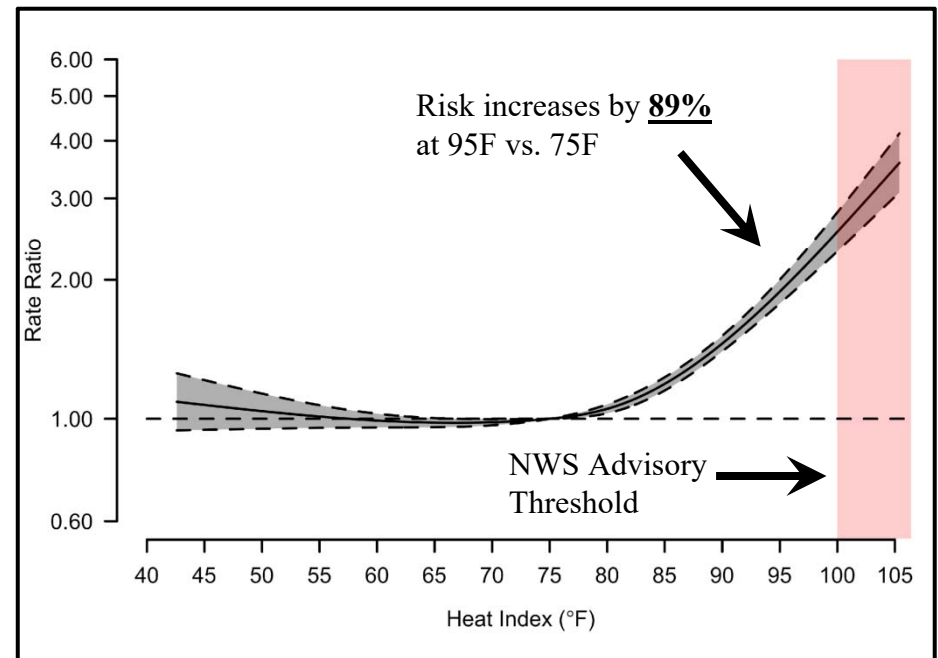


Risk of Heat-Specific ED Visits as it relates to Heat Index

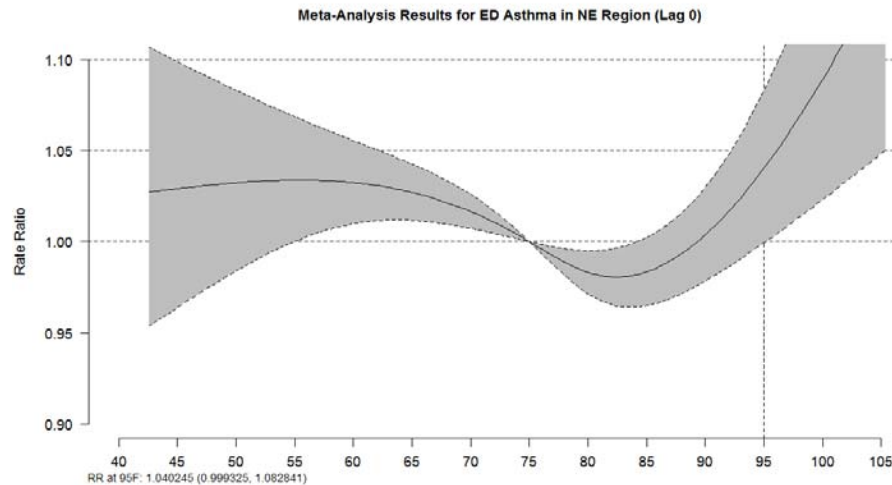
Cumulative risk, over one week, following a day with a max HI of 95°F (compared to 75°F)

- Risk for heat specific ED visits increases by **89%***

*Annually, during warm season (May-Sept)

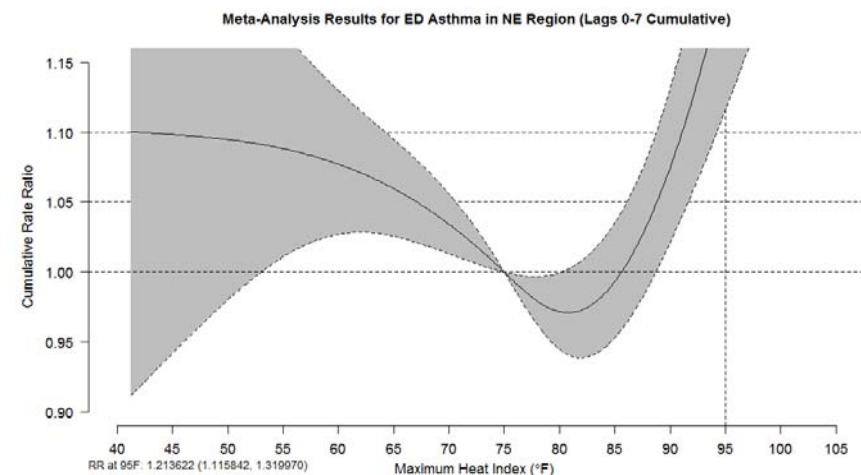


Risk of Asthma-Specific ED Visits as it relates to Heat Index

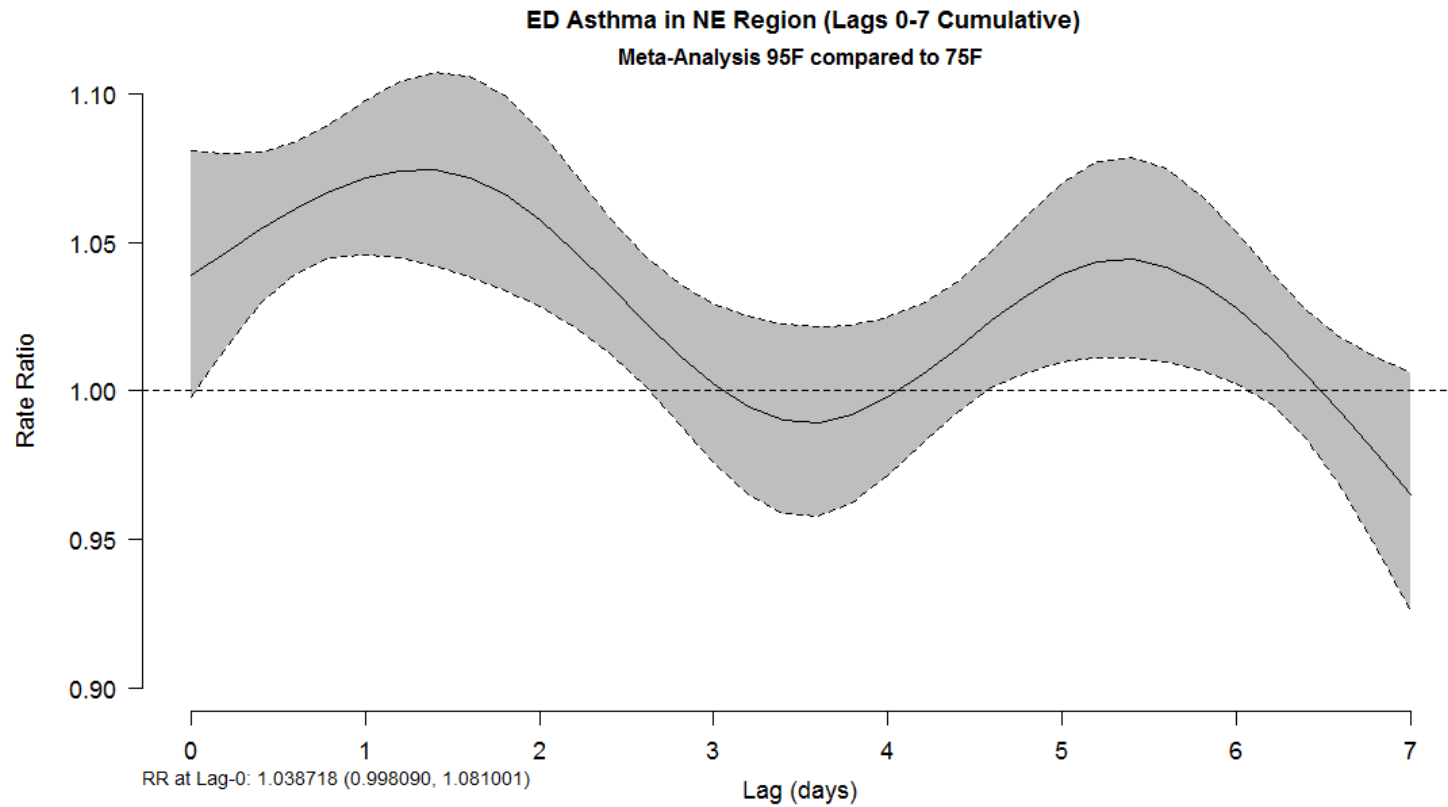


Day of Risk (Lag 0) on a day with a max HI of 95°F (compared to 75°F) is: 1.04 (0.99, 1.08).

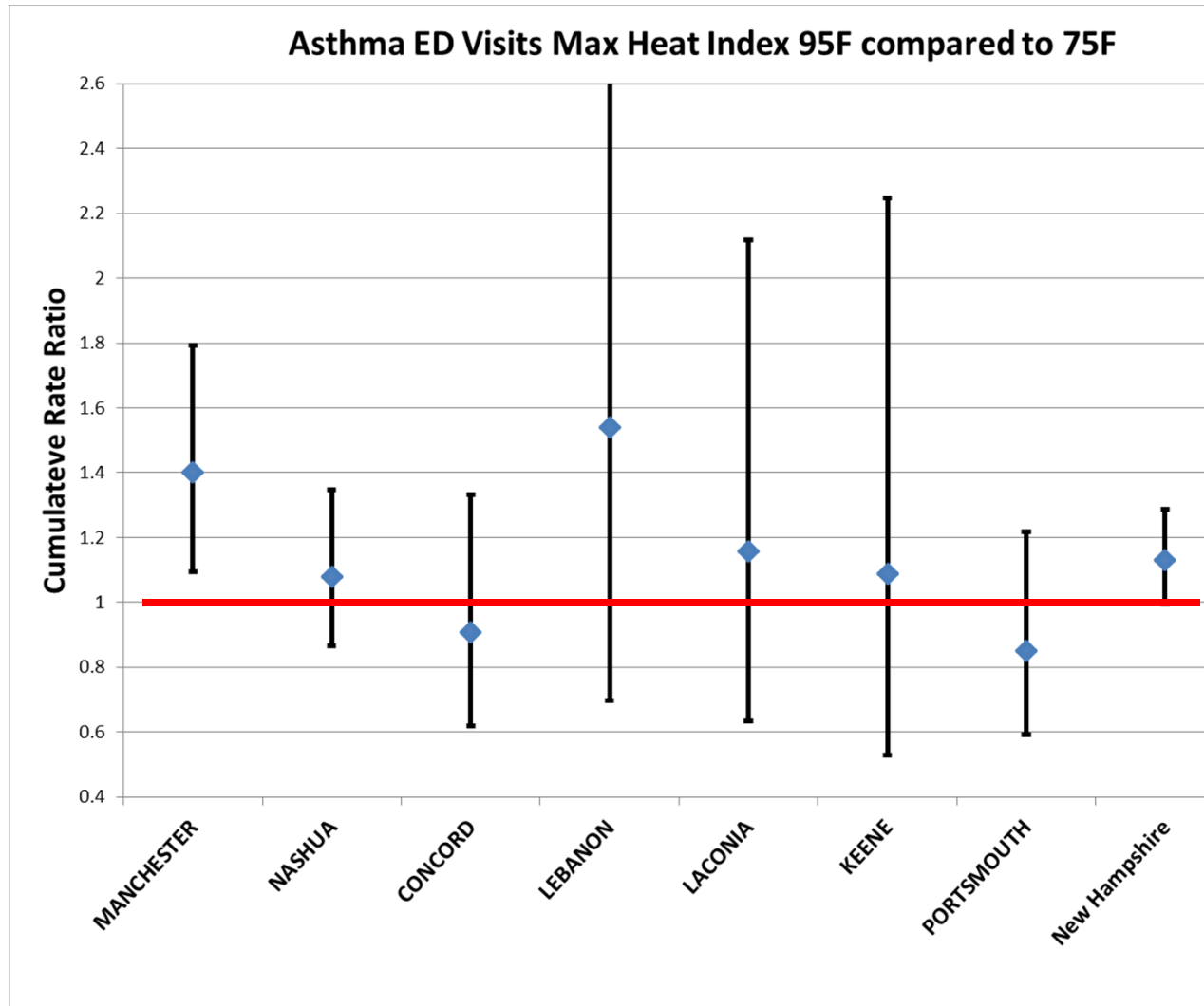
Cumulative risk, over one week, following a day with a max HI of 95°F (compared to 75°F) is: 1.21 (1.12, 1.32).



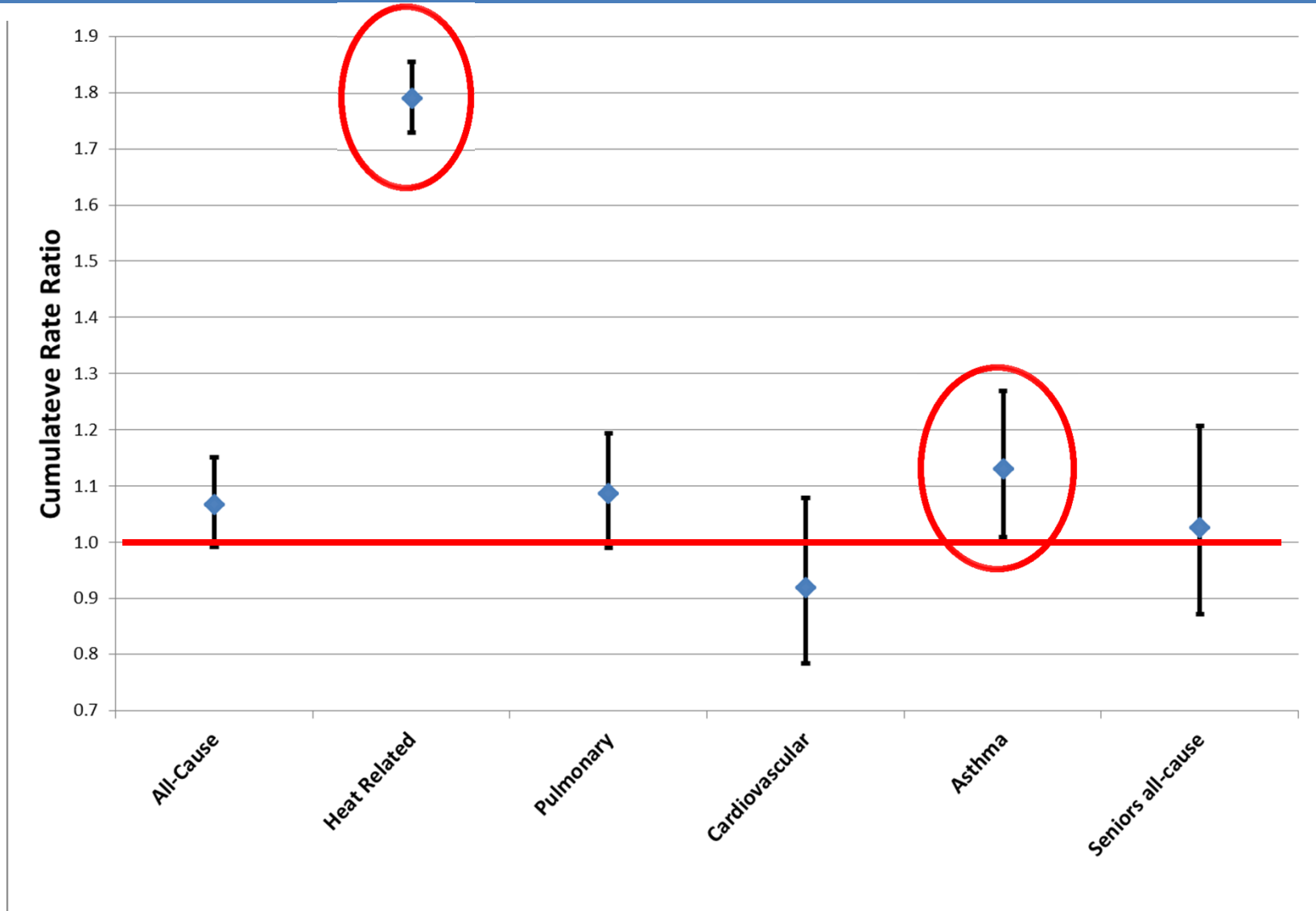
Risk of Asthma-Specific ED Visits as it relates to a time lag



Risk of Asthma-Specific ED Visits - By Location



Risk of Other Cause-specific ED Visits



NWS – Proposed Policy Change

NWS CURRENT THRESHOLDS FOR NORTHEAST

HEAT ADVISORY

100° - 104°F*

***For 2 or more hours**

HEAT WARNING

105°F and above

HEAT WAVE

3 consecutive days 90°F or higher

HEAT ADVISORY

95-104°F*

For 2 or more days, or 100-104°F for any length of time

HEAT WARNING

105°F and above

HEAT WAVE

3 consecutive days 90°F or higher

Potential Partnerships

Asthma Program & Climate and Health

